

The following table contains the specifications for the ThermalSafe systems to be installed. Variations in thermal optics are used to optimize for specific sites.

ThermalSafe Configuration	Pan/Tilt gimbal with Thermographic Thermal Infrared and Color Data and Video; cabinet assembly for power, communications, battery, remoting.	Cabinet Configuration	
Thermal Camera Specifications		Battery	2 x 12VDC, wide temp range
Array Format (8 or 14 bit video)	640 x 480, 320x240	Radio w/ external antenna, GPS antenna	Rugged wide temp LTE
Pixel Pitch	12-17 microns	Power Supply w/ battery UPS	120VAC--24VDC regulated [non solar opt]
Focal Length	19-35 mm	Network Switch	4 port wide temp LAN switch
Field of View	18 x 14 degrees	Power Control	Network accessible power switch
Zoom	2x, 4x E zoom, V zoom	Enclosure	NEMA3, lockable
Spectral Range	7.5 - 13.5 microns	[Optional] Solar Power	
Outputs	Imagery-over-network: 8 bit H.264 streaming and 14 bit raw	Solar Panel	Qty 2 30x60 photovoltaic panels
Color CMOS Specifications		Battery	Qty 2 12VDC, AGM, wide temp range
Array Format	2592 x 1944 (5MP)	Controller	Qty 1 24VDC regulator, tender
Pixel Pitch	1.4 microns	Battery Enclosure	30 x 24 x 24 vented, lockable, cabinet
Field of View	67.5 degrees (H)	Video Management System	
Outputs	Imagery over network: 8 bit H.264 video, 8 bit MJPEG, 8 bit raw	On Site	Local 24 hr continuous storage with cloud access for playback and real-time; cloud based event logging and snapshots on demand.
System Parameters		Cloud Access	User login with customer owned data, video viewing, historical review of motion events (snapshots).
Control	Network, server and mobile device app	ThermalSafe Automation Suite	
Weight	24 lbs	On Site	Real time tours with asset-specific monitoring and logging; short term local data storage with routine cloud storage; built in remote system management for software and hardware.
Dimensions	10 x 10 x 15 inches	Cloud Access	User login with customer owned data and on demand data sheets, graphs; auto alerts
Power Requirements	24VDC, 0.5A (w/o heater), 2A (w/ heater)		



COMPONENTS

- ThermalSafe rugged color/thermal camera unit with embedded computing
- Pan / Tilt gimbal assembly with harnesses
- Cabinet for power / UPS (battery), radio, remote service access (example pole-mount system in photo at right)
- ThermalSafe Automation Suite (thermal monitoring/reporting)
- DTI-Videonet embedded/Cloud combination Video Management System (security camera)

OUR PROCESS

- Customer consultation
- Delta Thermal Proposal
- Customer Proposal Acceptance
- Receipt of Order
- Proposal acceptance for building and deploying ThermalSafe units with cabinet enclosure hardware.
- System Production and Assembly, Test
- On Site Installation and Testing, Training
- Site Operational



Delta Thermal Inc
6339 E Speedway Blvd #103
Tucson, AZ 85710

Delta Thermal, Inc. Proprietary Information



ThermalSAFE

Substation Safety and Security Automation

OVERVIEW

Delta Thermal Inc (DTI) is offering ThermalSafe to automate the detection and reporting of hot spots in electrical substations and support color/thermal video perimeter security. One or more ThermalSafe units can be installed at a substation and enabled by DTI for monitoring, reporting and recording of both asset thermography and site security data. Our solar power option enables a fully operational system with less than 1 hour install.

"The industry needs to stop playing Russian roulette with its employees and assets."



THE PAST

Intermittent on site, hand held thermography

Hand held thermal imaging systems are outdated techniques that require manpower, can malfunction due to human error, and only take a snapshot of that exact moment the equipment is being monitored.

ThermalSafe offers automatic, 24 hour continuous thermal monitoring that enables for secure up-to-the minute data reporting on your mobile devices for remote monitoring and alerts. If your equipment leaves the desired temperature range your staff will be immediately sent an alert so you can promptly address the concern BEFORE system failure.

FEATURES

- Automatic, continuous measurement of equipment temperature throughout the day or night
- Up to the minute data report access using a networked desktop or mobile device
- Local recording of thermal and color video to solid state drive with motion snapshots
- On demand cloud access to live video, motion event history and clips
- Secure wireless network, tunnel for data to/from cloud
- Remote servicing when needed, to minimize site visits
- SampleThermalSafe dashboard

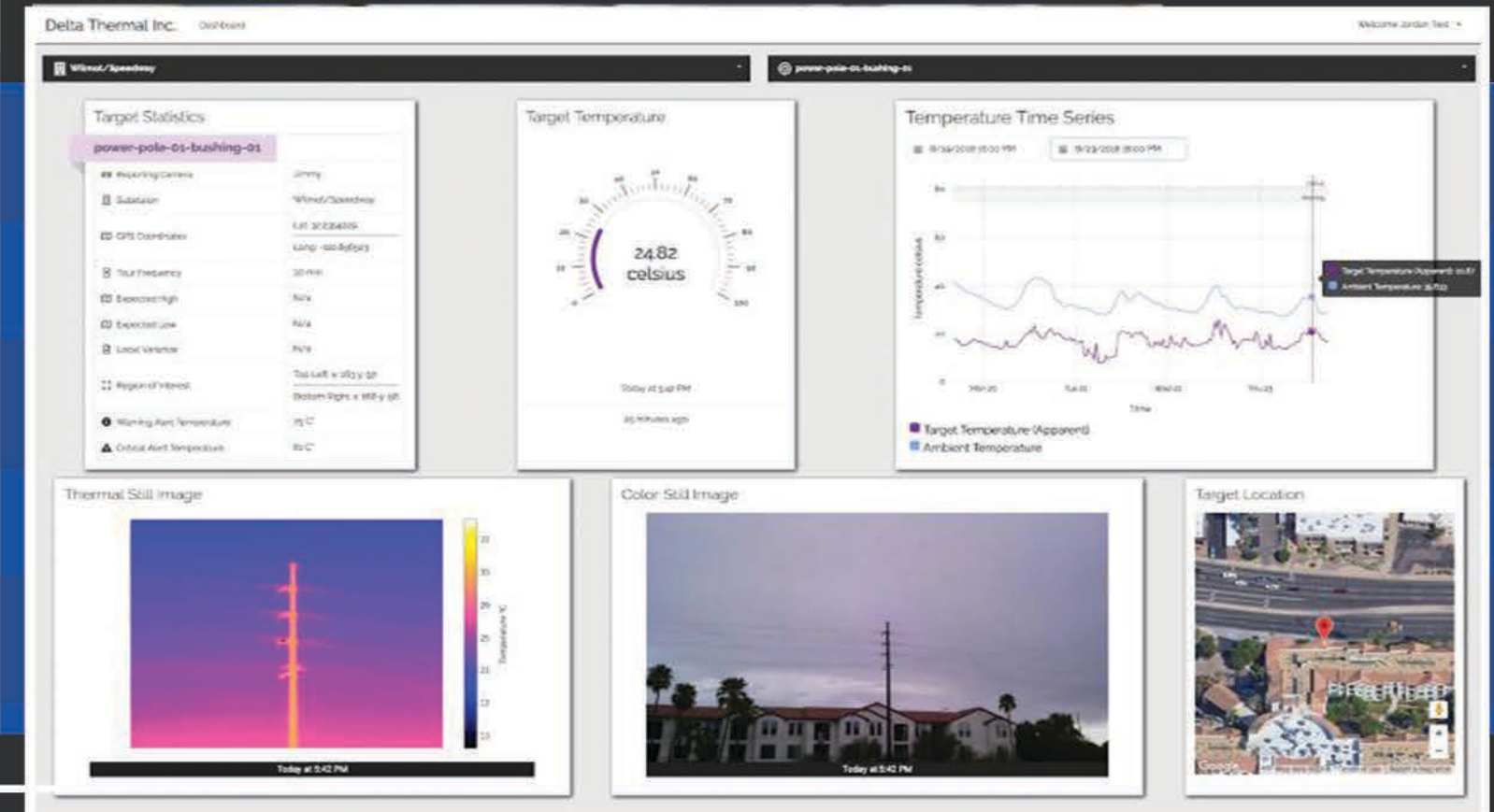
Delta Thermal, Inc. Proprietary Information

THE FUTURE

24 Hour Automated Monitoring w/ live notifications on your device

ThermalSAFE

Substation Safety and Security Automation



Delta Thermal, Inc. Proprietary Information